

Command List

Smart Style

Rock Howard



Special Moves: Special Button (REV Arts: Δ \square simultaneously)

Simple Special Moves	Reppuu Ken	Δ
	Shippuu Ken	(In air) Δ
	Hard Edge	$\leftarrow + \Delta$
	Rising Tackle	$\rightarrow + \Delta$
	Shinkuu Nage	(When close) $\downarrow + \Delta$

Special Moves: Command Inputs

Special Moves	Crack Counter	$\downarrow \blacktriangleleft \blacktriangleright + \times$
	Rage Run >Type: Layup	$\downarrow \blacktriangleleft \blacktriangleright + \times > \square$
	>Type: Cut	$> \times$
	>Type: Dunk	$> \Delta$
	>Type: Shift	$> \bigcirc$

Ignition Gears	Raging Storm	$\leftarrow + \Delta + \bigcirc$
	Shining Knuckle	N or $\rightarrow + \Delta + \bigcirc$

Recommended REV Accel Combo

$\bigcirc > \bigcirc > \bigcirc > \bigcirc > \bigcirc > \bigcirc > \bigcirc$ or $\leftarrow \Delta \bigcirc$ (1 power gauge bar)

Terry Bogard



Special Moves: Special Button (REV Arts: Δ \square simultaneously)

Simple Special Moves	Power Wave	Δ
	Burning Knuckle	$\leftarrow + \Delta$
	Power Dunk	$\rightarrow + \Delta$
	Power Charge	$\downarrow + \Delta > \Delta > \Delta$

Special Moves: Command Inputs

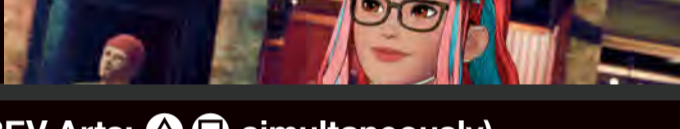
Special Moves	Crack Shoot	$\downarrow \blacktriangleleft \blacktriangleright + \times$

Ignition Gears	Power Geyser	$\leftarrow + \Delta + \bigcirc$
	Buster Wolf	N or $\rightarrow + \Delta + \bigcirc$

Recommended REV Accel Combo

$\bigcirc > \bigcirc > \bigcirc > \bigcirc > \bigcirc > \leftarrow \Delta$ or $\leftarrow \Delta \bigcirc$ (1 power gauge bar)

Preecha



Special Moves: Special Button (REV Arts: Δ \square simultaneously)

Simple Special Moves	Screw Leg	Δ
	Circular Step >Low Angle Kick	$\leftarrow + \Delta > \times$
	>Parabola Knee	$> \bigcirc$
	>Arc Elbow	$> \square$
	Sine-Cosine	$\rightarrow + \Delta$
	\rightarrow Tangent	(During Cosine) $\rightarrow + \Delta$
	Hyperbolic Kick	$\downarrow + \Delta$

Ignition Gears	Screw Archimedes Spiral	$\leftarrow + \Delta + \bigcirc$
	$P = mc^2$	N or $\rightarrow + \Delta + \bigcirc$

Recommended REV Accel Combo

$\bigcirc > [\bigcirc \times 5] > \downarrow + \Delta \square > \rightarrow + \Delta \cdot \rightarrow + \Delta$ or $\leftarrow \Delta \bigcirc$ (1 power gauge bar)

Tizoc



Special Moves: Special Button (REV Arts: Δ \square simultaneously)

Simple Special Moves	Justice Hurricane	(When close) Δ
	Icarus Crash	(In air)(When close) Δ
	Artemis Rex	$\leftarrow + \Delta$
	Poseidon Wave	$\rightarrow + \Delta$
	Olympus Over	$\downarrow + \Delta$

Special Moves: Command Inputs

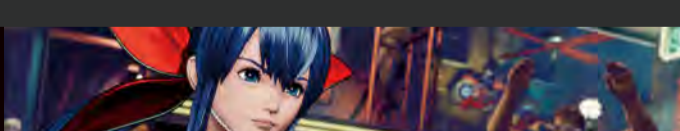
Special Moves	Hercules Throw	$\downarrow \blacktriangleleft \blacktriangleright + \square$
	Active Typhon	$\rightarrow \downarrow \blacktriangleleft + \times$

Ignition Gears	Daedalus Attack	$\leftarrow + \Delta + \bigcirc$
	Big Fall Griffon	(When close) N or $\rightarrow + \Delta + \bigcirc$

Recommended REV Accel Combo

1、 $\leftarrow + \Delta \square > \downarrow + \Delta \square$
 2、 $\bigcirc > \bigcirc > \text{in air } \Delta \square$ or $\leftarrow + \Delta \bigcirc$ (1 power gauge bar)

Hotaru Futaba



Special Moves: Special Button (REV Arts: Δ \square simultaneously)

Simple Special Moves	Hakki Shou	Δ
	Rengeki Shuu	(In air) Δ
	Kobi Kyaku	$\leftarrow + \Delta$
	Tenshin Shou	$\rightarrow + \Delta$
	Soushou Shin	$\downarrow + \Delta$

Special Moves: Command Inputs

Special Moves	Shajou Tai	(When close) $\downarrow \blacktriangleleft \blacktriangleright + \times$

Ignition Gears	Soushou Tenrenge	$\leftarrow + \Delta + \bigcirc$
	Tenshou Ranki	N or $\rightarrow + \Delta + \bigcirc$

Recommended REV Accel Combo

$\downarrow + \bigcirc > \bigcirc > \bigcirc > \bigcirc > \leftarrow + \Delta > \downarrow + \Delta$ or $\Delta \bigcirc$
 (1 power gauge bar)